



工匠精神 | 国际理念 | 全球视野

Craftsman spirit | International concept | Global vision

泉州市德捷装备有限公司
QUANZHOU DJM EQUIPMENT CO., LTD.

地址/Add : No. 557, Fushui, Futie Village, Kangmei Town, Nan'an City, Fujian Province

电话/Phone : +86 15980012906 (wechat / whatsapp)

邮箱/Email : xdm.neo@gmail.com

网站/Web: www.qzdjm.com



德捷装备



DJM
EQUIPMENT
BEST QUALITY

合作 · 共赢 · 创新 · 发展

Win-win cooperation and innovative development

荣誉资质 HONOR AND QUALIFICATION



工厂加工细节图 Detail drawing of factory processing



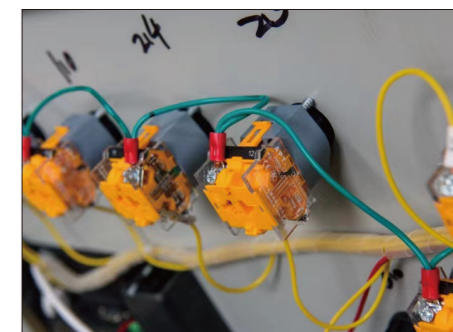
公司简介 Company Profile

我公司是一家集设备研发，生产制造，销售，售后服务于一身的高新技术企业。公司创办于九十年代初，地处经济发达，交通方便的海峡西岸著名侨乡-泉州。几十年来，公司规模迅速扩大，不断进行技术创新，并获得国家多项技术专利，综合实力不断提升。

产品主要包括矿山破碎设备、混凝土砌块成型机、液压制砖设备、轻质保温墙板机、自动码垛收砖线，混凝土搅拌设备，公司严格执行制造行业的最新标准，通过ISO9001-2015质量管理体系及CE认证，生产的产品以质量稳定，技术含量高著称，产品现已遍布世界数十个国家，赢得海内外客户的一致好评，我们始终关注客户的需求，不仅为客户提供高质量产品，同时提供包括指导、销售、安装调试、售后服务在内的一体化服务。

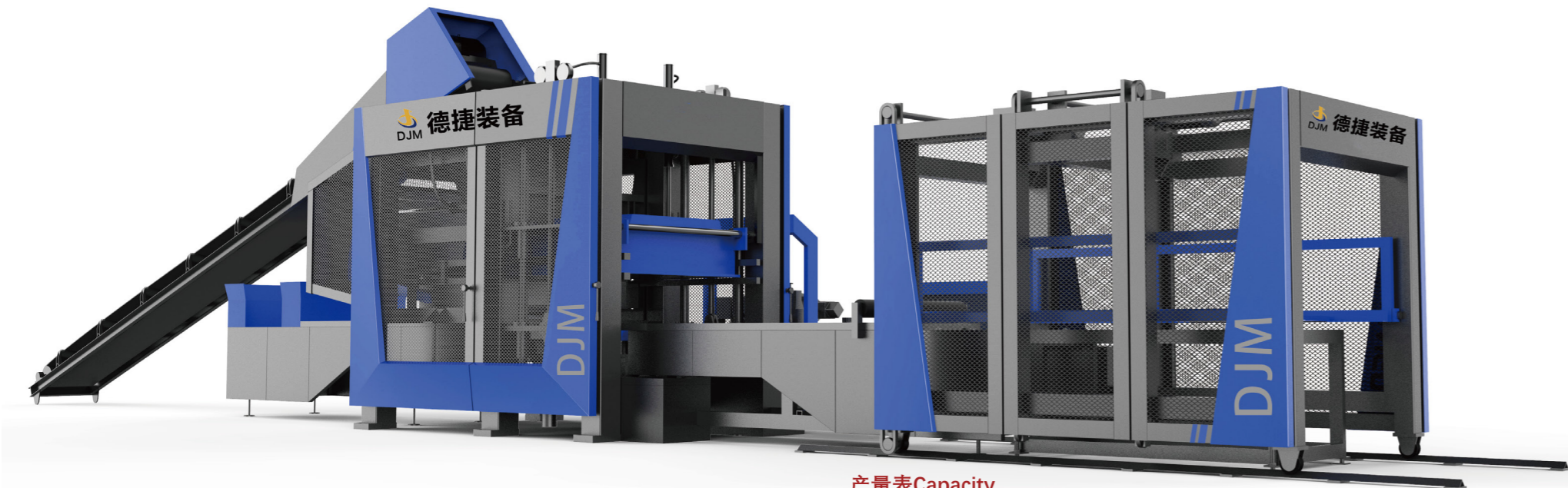
Our company is a high-tech enterprise integrating equipment research and development, manufacturing, sales and after-sales service. The company was founded in the early 1990s and is located in QUANZHOU. Over the past few decades, the company has rapidly expanded in scale, continuously carried out technological innovation, and obtained a number of national technology patents, and its comprehensive strength has continued to improve.

The products mainly include mining crushing equipment, concrete block machines, Hydraulic brick making machine, light-weight wall panel machines, automatic cuber brick collection lines, and concrete mixing equipment. The company strictly implements the latest standards of the machine manufacturing industry and has passed the ISO9001-2015 quality management system and CE certified, the products produced are famous for their stable quality and high technical content. The products are now distributed in dozens of countries around the world and have won unanimous praise from customers at home and abroad. We always pay attention to the needs of our customers, not only providing customers with high-quality products, but also Provide integrated services including guidance, sales, installation and commissioning, and after-sales service.



QT18-15 / QT15-15

全自动混凝土砌块成型机
Automatic Concrete Block Making Machine



产量表Capacity

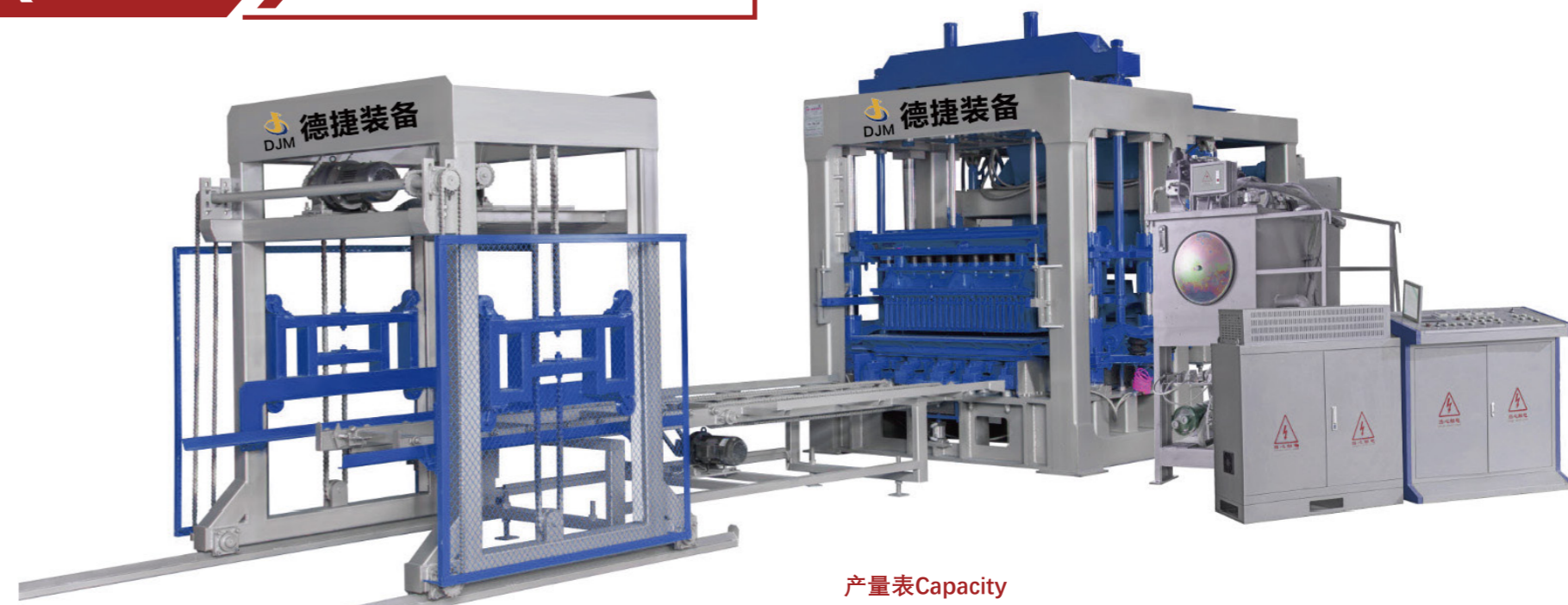
	(QT18-15/QT15-15)	QT18-15	QT15-15	QT18-15	QT15-15
产品类型 Type(solid/hollow)	规格尺寸 Specification(mm)	成型块数 (块/模) Pcs/mould	8小时/班产 8hours/class Output		
	390x190x190	18	15	25920	21600
	240x115x90	45	40	64800	57600
	240x115x51	100	84	144000	120960
	200x100x60	66	55	95040	79200

主要技术参数 Main technical parameters

	QT18-15	QT15-15	QT18-15	QT15-15
外形规格 Machine size	4000x3040x3610(mm)	4280x2630x3210(mm)	成型周期 Moulding period	18-25(S) 15-20(S)
振动频率 Vibration frequency	3800-4500(Times/Sub)	3800-4500(Times/Sub)	激振力 Vibration force	180(KN) 160(KN)
托架规格 Factory area	1450x1350x35(mm)	1350x1100x25-30(mm)	额定压力 Vated pressure	16(Mpa)
整机重量 Machine weight	20000(KG)	17200(KG)	装机容量 Power	91(KW) 75(KW)
成型方式 Mixer model	振动加压成型 Hydraulic vibration		叠板机装机容量 Stacking machine power	3.7(KW)

QT12-15 / QT9-15

全自动混凝土砌块成型机
Automatic Concrete Block Making Machine



产量表Capacity

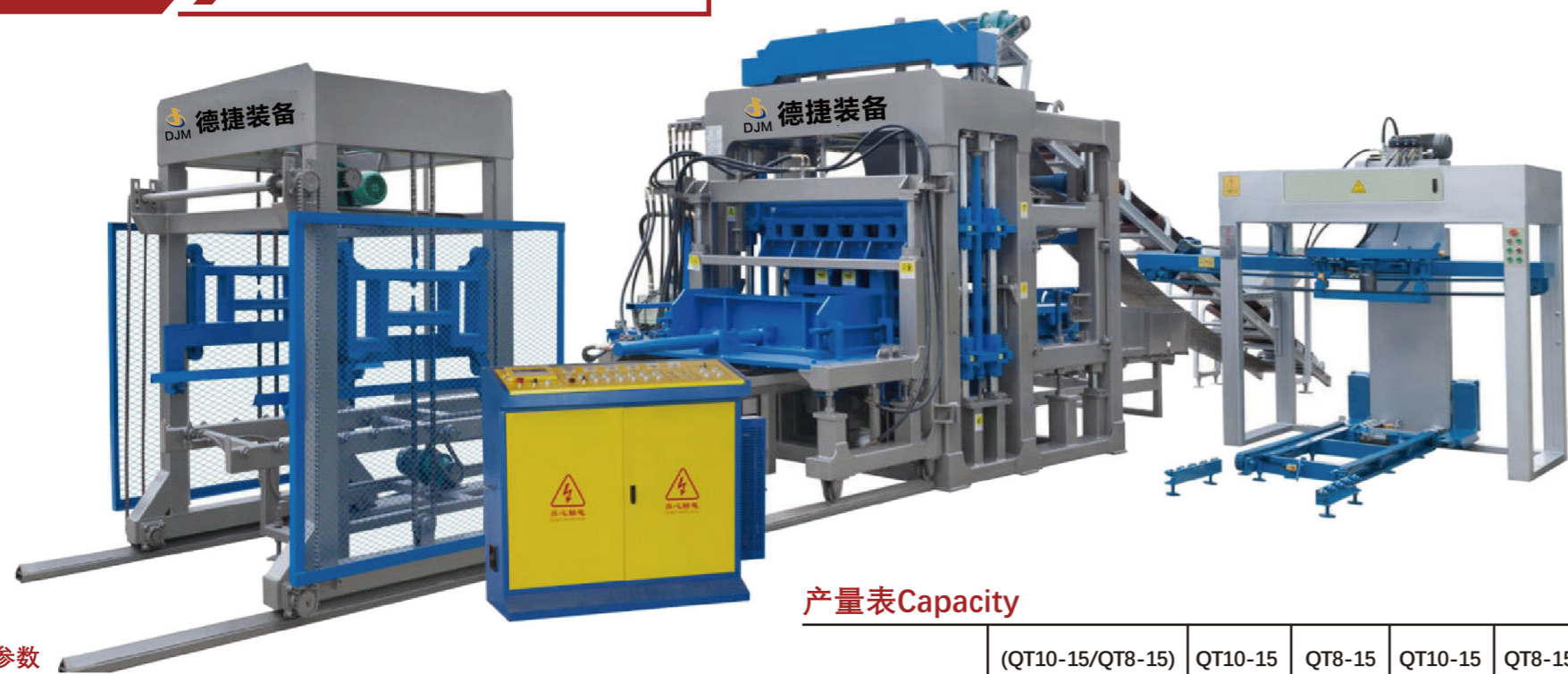
	(QT12-15/QT9-15)	QT12-15	QT9-15	QT12-15	QT9-15
产品类型 Type(solid/hollow)	规格尺寸 Specification(mm)	成型块数 (块/模) Pcs/mould	8小时/班产 8hours/class Output		
	390x190x190	12	9	17280	12960
	240x115x90	30	25	43200	36000
	240x115x51	70	50	100800	72000
	200x100x60	44	33	63360	47520

主要技术参数 Main technical parameters

	QT12-15	QT9-15	QT12-15	QT9-15
外形规格 Machine size	3508x2186x2910(mm)	3340x2156x2880(mm)	成型周期 Moulding period	15-20(S) 15-20(S)
振动频率 Vibration frequency	3800-4500(Times/Sub)	3800-4500(Times/Sub)	激振力 Vibration force	150(KN) 105(KN)
托架规格 Factory area	1350x880x35(mm)	1350x680x30(mm)	额定压力 Vated pressure	16(Mpa)
整机重量 Machine weight	15200(KG)	14200(KG)	装机容量 Power	59(KW) 44.25(KW)
成型方式 Mixer model	振动加压成型 Hydraulic vibration		叠板机装机容量 Stacking machine power	3.7(KW)

QT10-15 / QT8-15

全自动混凝土砌块成型机
Automatic Concrete Block Making Machine



主要技术参数 Main technical parameters

	QT10-15	QT8-15		QT10-15	QT8-15
外形规格 Machine size	3350x1896x2880(mm)	3580x1896x2880(mm)	成型周期 Moulding period	15-20(S)	15-20(S)
振动频率 Vibration frequency	3800-4500(Times/Sub)	3800-4500(Times/Sub)	激振力 Vibration force	105KN	95(KN)
托板尺寸 Pallet size	1100x880x25(mm)	980x860x25(mm)	额定压力 Vated pressure	16(Mpa)	
整机重量 Machine weight	16800(KG)	11500(KG)	装机容量 Power	45(KW)	44.25(KW)
成型方式 Mixer model	振动加压成型 Hydraulic vibration		叠板机装机容量 Stacking machine power	3.7(KW)	

产量表Capacity

	(QT10-15/QT8-15)	QT10-15	QT8-15	QT10-15	QT8-15
产品类型 Type(solid/hollow)	规格尺寸 Specification(mm)	成型块数 (块/模) Pcs/mould	8小时/班产 8hours/class Output		
	390x190x190	10	8	14400	11520
	240x115x90	24	21	34560	30240
	240x115x51	54	45	77760	64800
	200x100x60	35	28	50400	40320

QT6-15 / QT5-15

全自动混凝土砌块成型机
Automatic Concrete Block Making Machine



主要技术参数 Main technical parameters

	QT6-15	QT5-15		QT6-15	QT5-15
外形规格 Machine size	3200x1616x2860(mm)	3025x1836x2860(mm)	成型周期 Moulding period	15-20(S)	
振动频率 Vibration frequency	3800-4500(Times/Sub)	3800-4500(Times/Sub)	激振力 Vibration force	68(KN)	
托架规格 Factory area	980x680x20(mm)	1100x560x20(mm)	额定压力 Vated pressure	16(Mpa)	
整机重量 Machine weight	8500(KG)	6900(KG)	装机容量 Power	33.25(KW)	
成型方式 Mixer model	振动加压成型 Hydraulic vibration		叠板机装机容量 Stacking machine power	3.7(KW)	

产量表Capacity

	(QT6-15/QT5-15)	QT6-15	QT5-15	QT6-15	QT5-15
产品类型 Type(solid/hollow)	规格尺寸 Specification(mm)	成型块数 (块/模) Pcs/mould	8小时/班产 8hours/class Output		
	390x190x190	6	5	8640	7200
	240x115x90	15	16	21600	23040
	240x115x51	32	34	46080	48960
	200x100x60	21	20	30240	28800

QT4-15 / QT3-15

全自动混凝土砌块成型机 Automatic Concrete Block Making Machine



主要技术参数 Main technical parameters

	QT4-15	QT3-15		QT4-15	QT3-15
外形规格 Machine size	2400x1660x2030(mm)	1150x1040x1870(mm)	成型周期 Moulding period	15-20(S)	
振动频率 Vibration frequency	3800-4500(Times/Sub)	3800-4500(Times/Sub)	激振力 Vibration force	68(KN)	
托架规格 Factory area	980x560x20(mm)	680x540x20(mm)	额定压力 Vated pressure	16(Mpa)	
整机重量 Machine weight	6500(KG)	3500(KG)	装机容量 Power	20(KW)	17(KW)
成型方式 Mixer model	振动加压成型 Hydraulic vibration		叠板机装机容量 Stacking machine power	3.7KW	

产量表Capacity

	(QT4-15/QT3-15)	QT4-15	QT3-15	QT4-15	QT3-15
产品类型 Type(solid/hollow)	规格尺寸 Specification(mm)	成型块数 (块/模) Pcs/mould	8小时/班产 8hours/class Output		
	390x190x190	4	3	5760	4320
	240x115x90	14	8	20160	11520
	240x115x51	26	20	37440	28800
	200x100x60	16	10	23040	14400

DJ12000/10000 /8000/6000/4000

全自动单向液压制砖机 Automatic Hydraulic Brick Making Machine



产量表 Capacity

名称及图片 Name and picture	标准砖 Solid Brick	彩色地砖 Holland Brick	块/模 Pcs/Mould
规格 Size	240x115x51	200x100x60	
产品型号 Product model	DJ12000	54	39
	DJ10000	45	27
	DJ8000	30	24
	DJ6000	28	21
	DJ4000	20	16

注:以上产量表为理论计算值。成型周期、生产量与原材料、产品类型有关。
Note: The output listed above is based on theoretical calculation. The moulding cycle and output are subject to raw materials and products types.

主要技术参数 Main technical parameters

产品型号 Product model	额定压力 Rated pressure	最大压力 Maximum pressure	主机功率 Main Machine power	主机重量 Main machine weight
DJ12000	31.5Mpa	1200T	95.5KW	39T
DJ10000	31.5Mpa	1000T	66.4KW	27T
DJ8000	31.5Mpa	800T	49KW	25T
DJ6000	31.5Mpa	600T	41KW	23T
DJ4000	31.5Mpa	400T	30KW	21T
产品型号 Product model	成型周期 Cycle Time	成型面积 Forming area	托板规格 Pallet size	
DJ12000	18-30(S)	1440x850mm	1550x950mm	
DJ10000	18-30(S)	1100x850mm	1250x900mm	
DJ8000	18-30(S)	1110x680mm	1150x750mm	
DJ6000	18-30(S)	950x700mm	1000x750mm	
DJ4000	18-30(S)	850x700mm	950x750mm	

DJ16000/12000
/11000/9000

全自动双向液压制砖机
Automatic Hydraulic Brick Making Machine



产量表 Capacity

名称及图片 Name and picture	 空心砖 Solid Brick	 标准砖 Solid Brick	块/模 Pcs/Mould
规格 Size	390x190x190	240x115x51	
产品型号 Product model	DJ16000	15	57
	DJ12000	12	54
	DJ11000	10	51
	DJ9000	8	42

注:以上产量表为理论计算值。成型周期、生产量与原材料、产品类型有关。
Note: The output listed above is based on theoretical calculation. The moulding cycle and output are subject to raw materials and products types.



主要技术参数 Main technical parameters

产品型号 Product model	额定压力 Rated pressure	最大压力 Maximum pressure	主机功率 Main Machine power	主机重量 Main machine weight
DJ16000	31.5Mpa	1600T	133KW	48T
DJ12000	31.5Mpa	1200T	118KW	45T
DJ11000	31.5Mpa	1000T	118KW	38T
DJ9000	31.5Mpa	900T	105.5KW	33T
产品型号 Product model	成型周期 Cycle Time	成型面积 Forming area	托板规格 Pallet size	
DJ16000	18-25(S)	1500x1200mm	1450x1400mm	
DJ12000	18-25(S)	1440x850mm	1500x1050mm	
DJ11000	18-25(S)	1300x900mm	1400x1050mm	
DJ9000	18-25(S)	1150x900mm	1300x950mm	

DJ1500/2000
/3000/4000

路沿石、路面砖液压成型机
Hydraulic Molding Machine for Curbstone
and Pavement Brick



主要技术参数 Main technical parameters

产品型号 Product model	油泵压力 Pump pressure	最大压力 Maximum pressure	电机功率 Motor power	油泵排量 Pump displacement
DJ1500	31.5Mpa	1500KN	8.5KW	25ml/r
DJ2000	31.5Mpa	2000KN	10.5KW	40ml/r
DJ3000	31.5Mpa	3000KN	14KW	63ml/r
DJ4000	31.5Mpa	4000KN	18KW	80ml/r

产品型号 Product model	外观规格 Machine size	班产量 Production-8hours	油缸直径 Cylinder diameter
DJ1500	1850x1850x1950mm	路面砖2000-3500块 路沿石500-800块	250mm
DJ2000	2300x1100x3500mm	路沿石300-600块	280mm
DJ3000	8000x2510x2400mm	路面砖3000-8000块 路沿石500-800块	360mm
DJ4000	8000x2510x2400mm	路面砖3000-8000块 路沿石500-800块	410mm



DJ-D1200

全自动码垛系统
Automatic Packing System



主要技术参数 Main technical parameters

整机功率 Total power	31KW(含7.5KW空压机) (实际运行功率14.2KW) 31KW (including 7.5KW air compressor) (actual operating power 14.2KW)	砖型范围 Brick type range	同向排列的常规砖型均试用。 (三角形砖外) Regular brick types arranged in the same direction are suitable.(Except triangular bricks)
整机重量 Total weight	10(T)	码砖周期 Palletizing cycle	平均周期15秒 The average cycle time is 15 seconds
码砖规格最大尺寸 Maximum size for Palletizing	1200x1200x1450mm	适用托板规格尺寸 Applicable pallet sizes	4型机至15型机 Type 4 to Type 15 machines



DJ-G1200

自留孔高位码砖机
High Position Brick Machinewith Hole Reserved



主要技术参数 Main technical parameters

夹头行程 Chuck stroke	1500 (cm)	码垛规格 Palletizing Specifications	1000x1000 (mm)
码垛高度 Palletizing height	1400 (mm)		1200x1200 (mm)
码垛周期 Palletizing cycle	15秒/层 15 seconds/layer	标准实心砖一层76块,一垛936块 Standard solid bricks: 76 pcs per layer, 936 pcs per stack.	
总重量 Total weight	14(T)	整机功率 Total power	48 (KW)



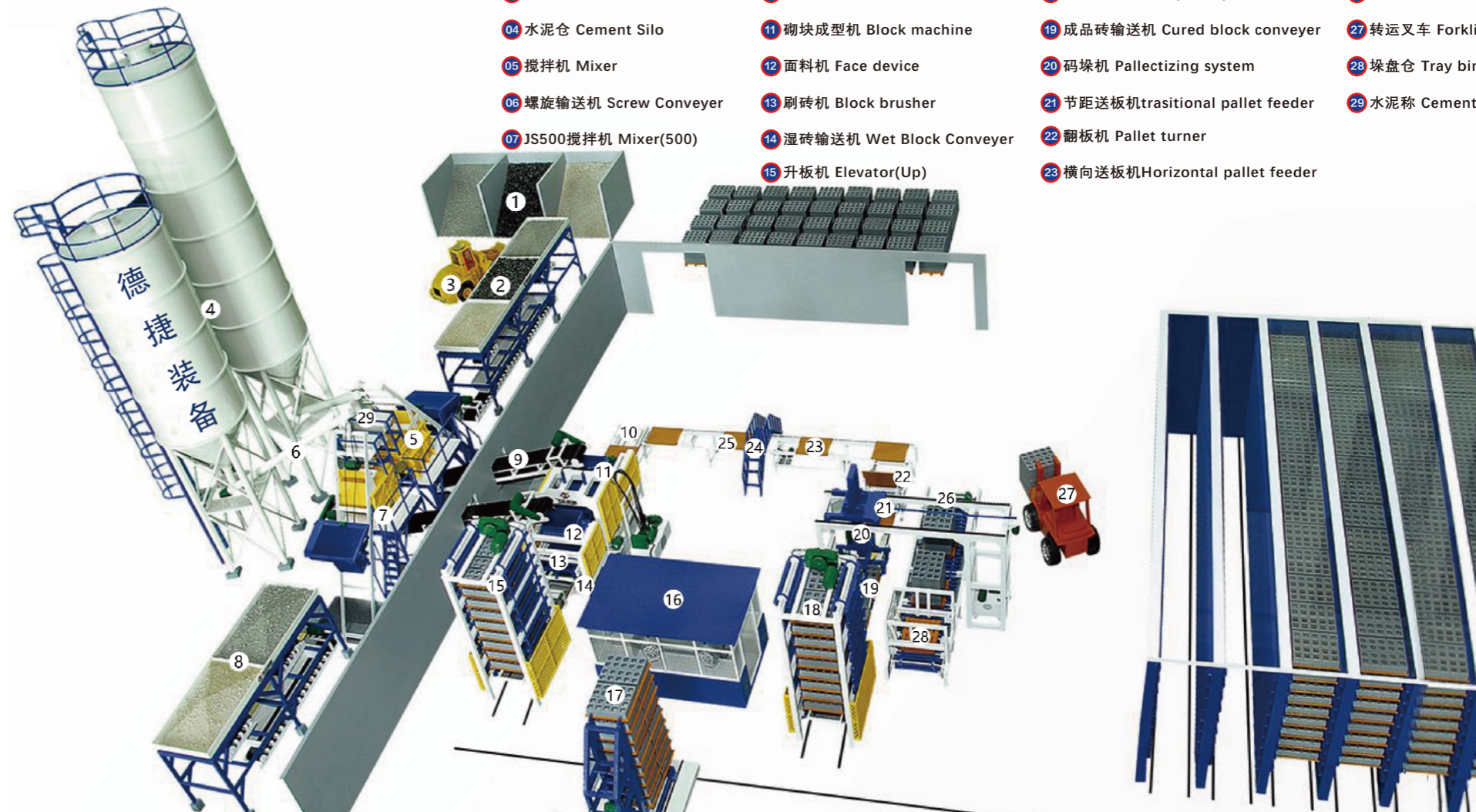
带面料简易生产线
Automated production equipment

- 01 砌块成型主机
Automatic Block Making Machine
- 02 湿产品输送机
Conveyor for Blocks
- 03 叠板机
Stacker
- 04 控制房
Control Room
- 05 粉罐
Silos
- 06 底料搅拌机
Mixer for Main Material
- 07 底料皮带输送机
Belt Concrete for Main Material
- 08 面料皮带输送机
Belt Concrete for Color Pigment
- 09 面料搅拌机
Mixer for Color Pigment
- 10 自动上板机
Automatic Pallet feeder
- 11 液压站
Hydraulic Unit
- 12 底料配料机
Batcher for Main Material
- 13 螺旋输送机
Screw Conveyor
- 14 送板机
Pallet Conveyor
- 15 面料配料机
Batcher for Color Material



智能高位全自动生产线
Intelligent high-level automatic production line

- 01 原料 Raw material
- 02 三级配料机 Batching Plant
- 03 装载机 Wheelloader
- 04 水泥仓 Cement Silo
- 05 搅拌机 Mixer
- 06 螺旋输送机 Screw Conveyor
- 07 JS500搅拌机 Mixer(500)
- 08 二级配料机 Batching plant(PL800)
- 09 输送机 Belt conveyor
- 10 送板机 Pallet feeder
- 11 砌块成型机 Block machine
- 12 面料机 Face device
- 13 刷砖机 Block brusher
- 14 湿砖输送机 Wet Block Conveyor
- 15 升板机 Elevator(Up)
- 16 控制室 Control room
- 17 子母车 Cross and Vertical figer car
- 18 降板机 Elevator(Down)
- 19 成品砖输送机 Cured block conveyor
- 20 码垛机 Palletizing system
- 21 节距送板机 trsitional pallet feeder
- 22 翻板机 Pallet turner
- 23 横向送板机 Horizontal pallet feeder
- 24 阶梯 Stair
- 25 刷板机 Pallet brusher
- 26 链式输送带 Chain conveyer
- 27 转运叉车 Forklift
- 28 垛盘仓 Tray bin
- 29 水泥称 Cement scale



混凝土搅拌站分解图 Components Description

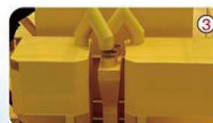
型号/Models	HZS60	HZS90	HZS120	HZS180	HZS240
生产率/Production(m ³ /hr)	60	90	120	180	240
搅拌主机 Mixer					
型号/Models	JS1500	JS1500	JS2000	JS3000	JS4000
搅拌功率/Mixing Power(kw)	2X22	2X30	2X37	2X55	2X75
出料容量/Output(m ³)	1	1.5	2	3	4
骨料粒径/Aggregate Size (mm)	≤60	≤80	≤120	≤150	≤150
配料仓 Hopper					
仓容积/Hopper Capability(m ³)	13	15	25	30	50
仓格数/Hopper Quantity	4-6	4-6	4-6	4-6	4-6
搅拌周期/Mixing Cycle (s)	60	60	60	60	60
皮带机输送能力/Conveyor Capability (t/hr)	200	300	400	600	800
总功率(不含螺旋) Total Power (kw)(without screw conveyor)	99	115	133	187	237



外加剂计量
Additive Weighing System



水称计量
Water Weighing System



水泥粉煤灰计量
Cement & Fly ash Weighing System



骨料配料站
Aggregate Batcher



控制房
Control Room



过渡料仓
Transition Hopper



搅拌主机
Mixer



卸料斗
Discharge Hopper



斜皮带机
Inclined Belt Conveyor

移动式混凝土搅拌站 Mobile Concrete Batching Plant



主要技术参数 Main technical parameters

产品型号 Product model	生产率 Production(m ³ /hr)	搅拌主机 Mixer	称量精度 Weighing Precision	
			骨料 / Aggregate	其它 / Other
YHZS25	25	JS500	±2%	±1%
YHZS35	35	JS750	±2%	±1%
YHZS50	50	JS1000	±2%	±1%
YHZS75	75	JS1500	±2%	±1%

产品型号 Product model	整机功率 (kw) Total Power	整机重量 (t) Weight	拖挂时速 (kamm/hr) Trailing Speed
YHZS25	42	20	15
YHZS35	56	21	15
YHZS50	82	25	15
YHZS75	98	27	15

自动化生产设备 Automated production equipment



核心竞争力 Core competitiveness

9防12特:性价比最高、自重轻、寿命长、性价比高、隔热、防水、隔音、实心板、节能环保、竞争力最强、产品质量最优、节能环保、防火、任意切割、握钉力强、钢结构抗震节能集成房、绿色环保全部选用绿色环保建筑材料。

9 Protection 12 Features: The most cost-effective, light weight, long life, High Cost-effective, heat insulation, waterproof, sound insulation solid board, energy saving and environmental protection, strongest competitiveness, best product quality, energy saving and environmental protection, fire prevention, arbitrary cutting, strong nail holding force, steel structure Earthquake-resistant energy-saving integrated house green and environmental protection, all use green building materials.

生产工艺流程图 Production process flow diagram

- 01 组装模具/Assemble the mould
- 02 放钢筋/Put the steel bar
- 03 送模具车/Send the mould cart
- 04 配料·发泡·搅拌/Burdening.Foaming. Mixing
- 05 浇筑到模具车中/Pouring into mould
- 06 移走静养/Move away to wait
- 07 自动脱模打包入库养护
Automatic demoulding, packing into storage for curing
- 08 养护期满后检验合格出库
After the curing period expires, inspect the products and the products can be send out from storage when they are qualified

立式水泥复合隔墙板设备生产线:控制系统

Vertical cement composite partition wall panel equipment production line: control system



▲采用西门子、施耐德等国际知名品牌
Adopt Siemens, Schneider and other internationally renowned brands

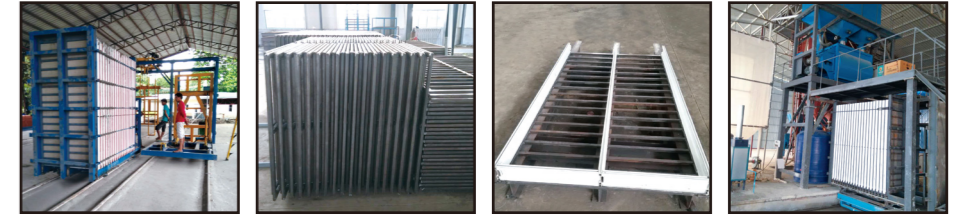
发泡说明 Foaming instructions



▲可以添加聚苯颗粒EPS或者陶粒作为主要轻质保温核心材料
Can add EPS or Ceramsite as the main lightweight insulation core material

立式水泥复合隔墙板设备生产线:移动式模具车

Vertical cement composite partition wall panel equipment production line: mobile mould cart

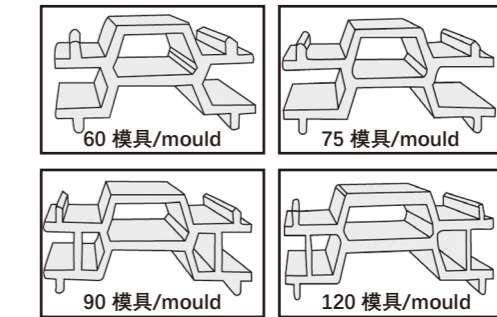


每一块模具的四周用铝合金模具固定好(有公母槽设计)再进行浇筑!
Before pouring each mould would be fixed with aluminum alloy mould (with male and female groove design)

移动式生产模式:由于模具车要移动,一般我们设计的模具车,每车每次可生产90型隔墙板40块,其产品尺寸为2400*610*90(100、120、150、180)等。

Mobile production mode: Because the mould cart needs to move, the mould cart that we design, generally each cart can produce 40 pieces of wall panel that model is 90 at one time, and the product size is 2400*610*90 (100, 120, 150, 180) and etc.

铝合金模具/Aluminum Alloy Mould



铝合金模具 Aluminum Alloy Mould	75 series	90 series	100 series	120 series	150 series
KD40成型车 KD40 Shaped Car	48pcs/tablets	40pcs/tablets	40pcs/tablets	32pcs/tablets	24pcs/tablets

自动拆板机 Automation dismantling machine



技术参数 Technical parameter

功用 Function	将墙板从成型机中夹出，推压合拢，翻转90°，送到指定距离打包好，由叉车转送到养护场。 The wall panels are pinched out of from forming machine, pushed and pressed to make fold, then overturned 90°, sent to the designated distance for packaging, and transferred to the maintenance site by a forklift.	
电机功率 Motor Power	液压站电机 Hydraulic Unit Motor	4Kw
	行走吊电机 Walking crane Motor	XWD3-4-47-2.2Kw
油缸行程 Oil Cylinder Stroke	推板装置/Pallet pushing device	980mm
	翻转油缸/Flip cylinder	650mm

产量/台 Yield/Station	75mm厚度 (thickness)	12张 (PCS)
	90mm厚度 (thickness)	10张 (PCS)
	100mm厚度 (thickness)	9张 (PCS)
	120mm厚度 (thickness)	8张 (PCS)
外形尺寸 Appearance Size	3000 X 5300 X 3500mm	
结构组成 The Structure And Composition	液压站电机, 夹板机构, 行走机构, 翻转油缸, 推板装置, 电器控制柜 Hydraulic Unit Motor, Splint mechanism, walking mechanism, flip cylinder, pallet pushing device, Electrical control cabinet	



JQ立式搅拌机/Pan type concrete mixer



行星式搅拌机/Dmp planetary mixer



JS 500搅拌机/JS 500 mixer



JS 750搅拌机/JS 750 mixer



缠绕膜包装机/Stretch film packing machine



PET包装机/PET packing machine



自动浸泡机/Automatic soaking machine



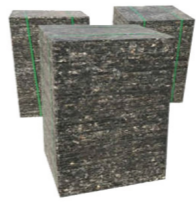
PL 1200型混凝土配料机
PL 1200 Batcher



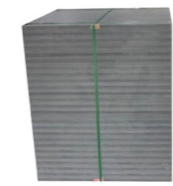
PL 800型混凝土配料机
PL 800 Batcher



自动上板机/ Auto pallet feeder



GMT Pallet



PVC Pallet



水泥秤/Cement scale



搅拌机电控集成系统/Mixer electric control integrated system

BLOCK MOULD

水泥砖模具 Mould

砖块图样 Series

BLOCK MOULD

LIVE CASES

客户现场案例 Customer Site Cases

常规砌块模具 Conventional block molds



制品应用实景 Product application reality

